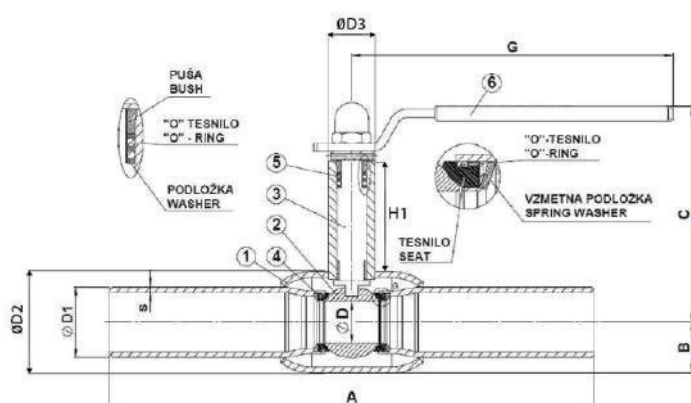


- Varjena krogelna pipa KPU
- Welded ball valve KPU

## KPU UVARNA IZ OGLJIKOVEGA JEKLA / KPU WELDED CARBON STEEL



// Reduciran pretok / Reduced bore



### Materiali / Materials

1	Ohišje Body	Ogljikovo jeklo – St37-2 (jeklo 20) Carbon Steel – St37-2 (steel 20)
2	Krogla Ball	Nerjavno jeklo - 1,4301 (X5CrNi18-10) AISI 304 Stainless steel - 1,4301 (X5CrNi18-10) AISI 304
3	Vreteno Stem	Nerjavno jeklo – 1.4006 (X12Cr13) AISI 410 Stainless Steel – 1.4006 (X12Cr13) AISI 410
4	Tesnilo krogle Ball seats	PTFE + 20% Carbon
5	O-Obroč O-Ring	Viton
6	Ročica Handle	Ogljikovo jeklo (cinkano) – S235JR (St 37-2) Carbon steel (galvanized) – S235JR (St 37-2)

### Navor / Torque

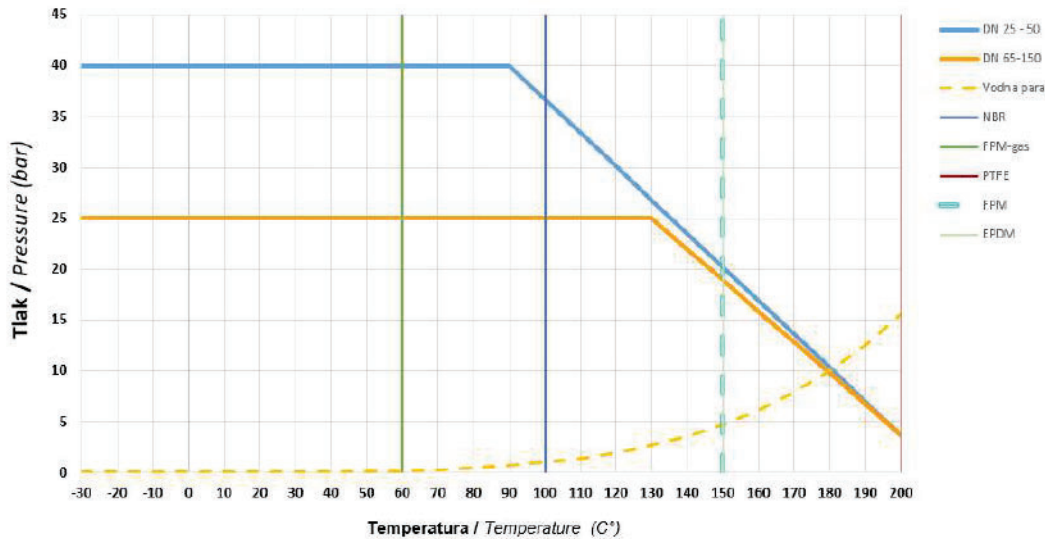
DN	Maks. navor Max torque P = 16 bar T = 20°C	Maks. navor Max torque P = 40 bar T = 20°C
	[Nm]	[Nm]
15	4	5
20	4	5
25	8	12
32	15	20
40	25	30
50	50	60
65	70	83
80	85	100
100	135	150
125	235	230
150	250	300
200	400	700

**Opombe:** Navori so bili izmerjeni s čisto vodo pri sobni temperaturi na ventilih s PTFE tesnili. Navor se lahko poveča pri ventilih, ki imajo tesnila iz drugačnih materialov, pri merjenju z različnimi tekočinami, višjimi temperaturami, posebnimi obratovalnimi pogoji in/ali v primeru, da je ventil dlje časa pod diferencialnim tlakom, ne da bi obratoval.

**Remarks:** The torques were measured on valves supplied with virgin PTFE seats, with clean water at room temperature. For valves with other seat material, different fluids, higher temperatures, specific operating conditions and/or in case the valve is kept for a long time under differential pressure without being operated, the torque can increase.

// Delovna temperatura / Working temperature: -20 °C/+200 °C

## Diagram tlak | temperatura / Pressure | temperature chart



## KPU DN ... PN40 RU VX PX

## PN40

Art.	DN	A	C	ØD	ØD1	ØD2	ØD3	H1	G	B	s	Teža / weight [kg]
A958341	15	210	92	10	21,3	34	22	40	135	17	2,0	0,76
A958342	20	230	95	15	26,9	42,7	22	40,8	135	21	2,3	1,15
A958343	25	230	115	20	33,7	48	26	52	160	24	2,6	1,57
A958344	32	260	120	25	42,4	60	26,3	50	160	30	2,6	2,35
A958345	40	260	130	32	48,3	76	34	45	230	36,5	2,6	3,50
A958346	50	300	140	40	60,3	89	34	48	230	44,5	2,9	4,10
A958347	65	300	175	50	76,1	114	34	55,5	300	57	2,9	7,00
A958348	80	300	190	65	88,9	140	40	55,5	300	70,5	3,2	9,00
A958349	100	325	215	80	114,3	168	42	60	400	84	3,6	12,90
A958350	125	325	230	100	139,7	181	50	70	400	90	4,0	16,70
A958351	150	350	250	125	168,3	219	49,8	70	400	110	4,5	23,50
A958352	200	400	290	150	219,1	273	76	103*	Ø300	150	4,5	56,00

Maks. dovoljen tlak: DN65-DN150 = 25 bar  
DN200 = 16 bar

### Opombe

DN200 z ročnim polžnim pogonom.  
\*Do vrha prirobnice.

Max. allowable pressure: DN65-DN150 = 25 bar  
DN200 = 16 bar

### Notes

DN200 with manual gearbox.  
\*To the top of the flange.

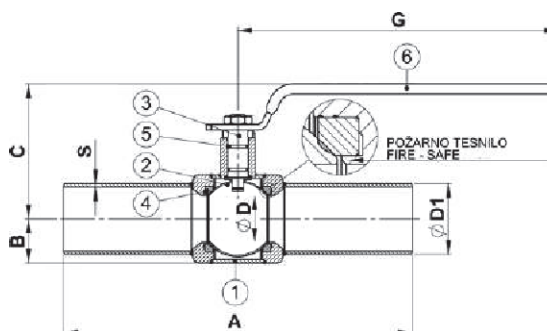
- **Varjene krogelne pipe KPT**
- **Welded ball valves KPT**

## KPT UVARNA IZ OGLJIKOVEGA JEKLA, REDUCIRAN PRETOK / KPT WELDED CARBON STEEL, REDUCED BORE

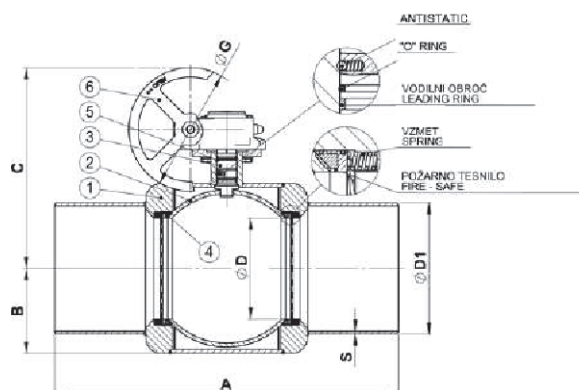


// Reduciran pretok / Reduced bore

DN20-DN250



DN300



### Materiali / Materials

1	Ohišje Body	Ogljikovo jeklo – A105, P235TR2 Carbon Steel – A105, P235TR2
2	Krogla Ball	Nerjavno jeklo - 1,4301 (X5CrNi18-10) AISI 304 Stainless steel - 1,4301 (X5CrNi18-10) AISI 304
3	Vreteno Stem	Nerjavno jeklo – 1.4028 (X30Cr13) AISI 420 Stainless Steel – 1.4028(X30Cr13) AISI 420
4	Tesnilo krogle Ball seats	PTFE*
5	O-Obroč O-Ring	PTFE + Viton
6	Ročica Handle	Ogljikovo jeklo (cinkano) – S235JR (St 37-2) Carbon steel (galvanized) – S235JR (St 37-2)

\*DN20, DN25, DN200, DN250, DN300 imajo tesnilo s 15% grafitom.

\*DN20, DN25, DN200, DN250, DN300 have a 15% graphite seal.

### Navor / Torque

DN	Maks. navor Max torque P = 16 bar T = 20°C	Maks. navor Max torque P = 40 bar T = 20°C	Priporočljivi navor za pogon Recommendable torque for actuator
	[Nm]	[Nm]	[Nm]
20	8	15	20
25	15	20	30
32	20	30	45
40	25	40	60
50	35	55	80
65	45	80	120
80	60	100	150
100	90	150	200
125	180	350	450
150	250	500	700
200	400	700	1000
250	500	700	1200
300	600	800	1200

**Opomba:** Navori so bili izmerjeni s čisto vodo pri sobni temperaturi na ventilih s PTFE tesnili. Navor se lahko poveča pri ventilih, ki imajo tesnila iz drugačnih materialov, pri merjenju z različnimi tekočinami, višjimi temperaturami, posebnimi obratovalnimi pogoji in/ali v primeru, da je ventil dlje časa pod diferencialnim tlakom, ne da bi obratoval.

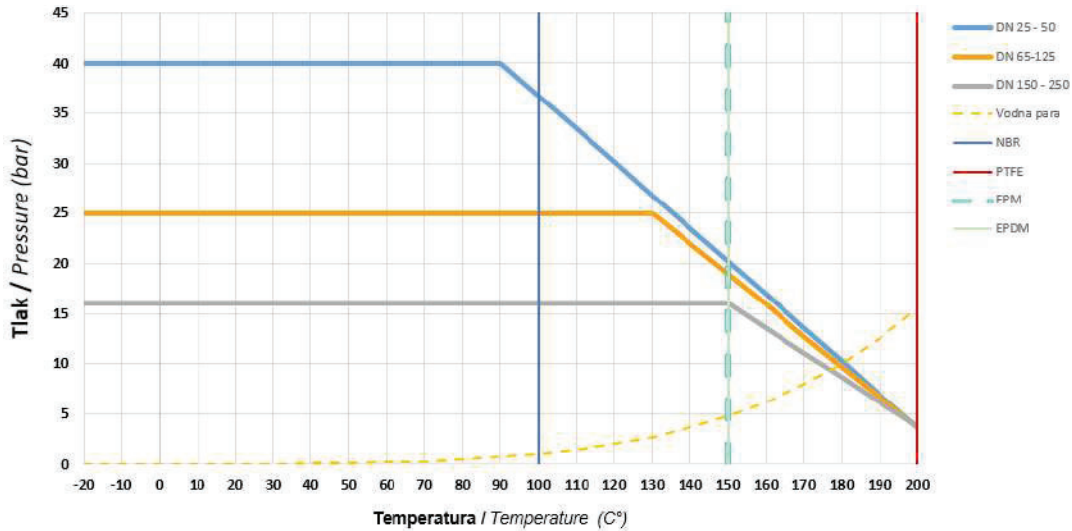
**Remarks:** The torques were measured on valves supplied with virgin PTFE seats, with clean water at room temperature. For valves with other seat material, different fluids, higher temperatures, specific operating conditions and/or in case the valve is kept for a long time under differential pressure without being operated, the torque can increase.

// Delovna temperatura / Working temperature: -20 °C/+200 °C

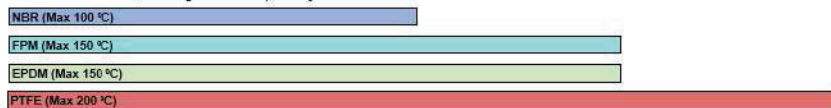
(Za temperature nižje od -20 °C kontaktirajte proizvajalca /

For temperature below -20 °C please contact manufacturer)

## Diagram tlak I temperatura / Pressure I temperature chart



### Tesnila vreteno, ohišje / Stem, body seals



## KPT DN ... PN40 RU PX PX

## PN40

Art.	DN	A	B	C	ØD	ØD1	G	S	Teža / weight [kg]
A958102	20	270	16,9	71,6	15,8	26,9	153	2,6	0,81
A958103	25	270	21,2	82,7	20	33,7	153	2,6	1,05
A958104	32	270	24,2	90,3	25	42,4	153	2,6	1,35
A958105	40	270	30,2	108,3	31	48,3	237	2,9	1,91
A958106	50	300	38,1	116	40	60,3	276	2,9	3,78
A958107	65	360	44,5	122,5	50	76,1	276	3,2	5,37
A958108	80	390	57,2	148,6	63,5	88,9	340	3,2	9,19
A958109	100	450	69,9	160,6	78	114,3	340	3,6	14,40
A958110	125	525	84,2	174,6	99	139,7	340	4,0	22,22
A958111	150	600	109,6	219	125	168,3	545	4,5	33,45
A958112	200	600	136,5	246	150	219,1	545	6,3	56,00
A958113	250	730	177,8	322,5	200	273	1000	6,3	116,5
A958114	300	850	209,5	495	250	323,9	Ø305	7,1	176,2

Maks. dovoljen tlak / Max. allowable pressure: DN65-DN150 = 25 bar, DN150-DN300 = 16 bar

### Opombe

Vgradna dolžina ustreza standardu EN12982:2009 Basic series 68.

Požarno tesnilo.

- DN300:
- vzmetena tesnila
  - antistatična izvedba
  - ročni polžni pogon

DN20 - DN40 polna krogla. DN50 - DN300 votla krogla.

Nadgradnje na strani 79 - 86.

### Notes

Face to face dimensions conform to EN12982:2009 Basic series 68.

Fire safe design.

- DN300:
- spring loaded washers
  - antistatic design
  - manual gearbox

DN20 - DN40 solid ball. DN50 - DN300 hollow ball.

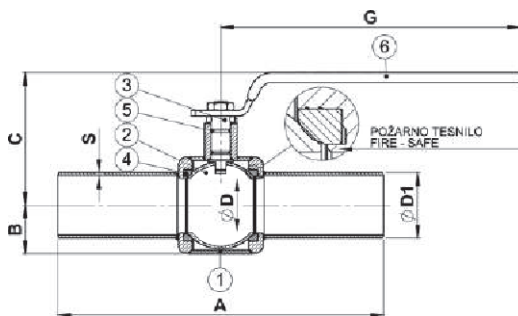
Upgrades on pages 79 - 86.

# KPT UVARNA IZ OGLJIKOVEGA JEKLA, POLNI PRETOK / KPT WELDED CARBON STEEL, FULL BORE

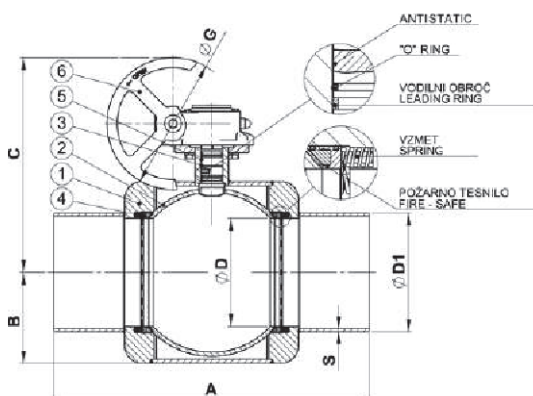


// Polni pretok / Full bore

DN15-DN200



DN250



## Materiali / Materials

1	Ohišje Body	Ogljikovo jeklo – A105, P235TR2 Carbon Steel – A105, P235TR2
2	Krogla Ball	Nerjavno jeklo - 1,4301 (X5CrNi18-10) AISI 304 Stainless steel - 1,4301 (X5CrNi18-10) AISI 304
3	Vreteno Stem	Nerjavno jeklo – 1.4028 (X30Cr13) AISI 420 Stainless Steel – 1.4028(X30Cr13) AISI 420
4	Tesnilo krogle Ball seats	PTFE*
5	O-Obroč O-Ring	PTFE + Viton
6	Ročica Handle	Ogljikovo jeklo (cinkano) – S235JR (St 37-2) Carbon steel (galvanized) – S235JR (St 37-2)

\*DN15, DN20, DN150, DN200, DN250 imajo tesnilo s 15% grafitom.

\*DN15, DN20, DN150, DN200, DN250 have a 15% graphite seal.

## Navor / Torque

DN	Maks. navor Max torque P = 16 bar T = 20°C	Maks. navor Max torque P = 40 bar T = 20°C	Priporočljivi navor za pogon Recommendable torque for actuator
	[Nm]	[Nm]	[Nm]
15	6	10	20
20	8	15	20
25	15	20	30
32	20	30	45
40	25	40	60
50	35	55	80
65	45	80	120
80	60	100	150
100	90	150	200
125	180	350	450
150	250	500	700
200	400	700	1000
250	500	700	1200

**Opomba:** Navori so bili izmerjeni s čisto vodo pri sobni temperaturi na ventilih s PTFE tesnili. Navor se lahko poveča pri ventilih, ki imajo tesnila iz drugačnih materialov, pri merjenju z različnimi tekočinami, višjimi temperaturami, posebnimi obratovalnimi pogoji in/ali v primeru, da je ventil dlje časa pod diferenčnim tlakom, ne da bi obratoval.

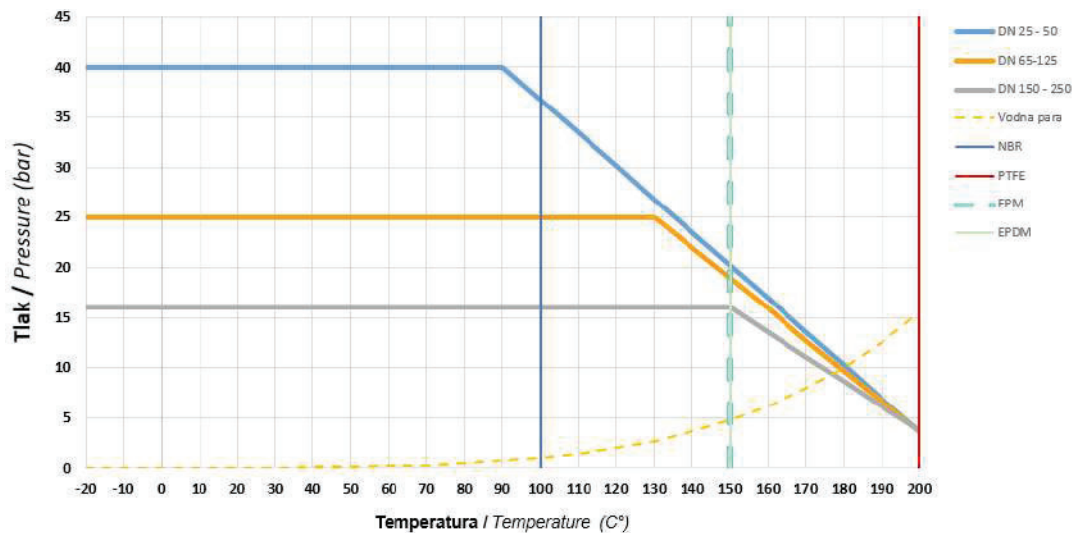
**Remarks:** The torques were measured on valves supplied with virgin PTFE seats, with clean water at room temperature. For valves with other seat material, different fluids, higher temperatures, specific operating conditions and/or in case the valve is kept for a long time under differential pressure without being operated, the torque can increase.

// Delovna temperatura / Working temperature: -20 °C/+200 °C

(Za temperature nižje od -20 °C kontaktirajte proizvajalca /

For temperature below -20 °C please contact manufacturer)

## Diagram tlak I temperatura / Pressure I temperature chart



### Tesnila vreteno, ohišje / Stem, body seals



## KPT DN ... PN40 DU PX PX

## PN40

Art.	DN	A	B	C	ØD	ØD1	G	S	Teža / weight [kg]
A958001	15	270	16,9	72,4	15,9	21,3	153	2,6	0,71
A958002	20	270	21,2	82,6	20	26,9	153	2,6	0,95
A958003	25	270	24,2	90,3	25	33,7	153	2,6	1,34
A958004	32	270	30,2	108,3	31	42,4	237	2,9	2,40
A958005	40	270	38,1	116	40	48,3	276	2,9	3,63
A958006	50	300	44,5	122,5	50	60,3	276	2,9	5,33
A958007	65	360	57,2	148,6	63,5	76,1	340	3,2	10,28
A958008	80	390	69,9	160,6	78	88,9	340	3,2	15,68
A958009	100	450	84,2	174,6	99	114,3	340	3,6	19,86
A958010	125	525	109,6	219	125	139,7	545	4,0	26,74
A958011	150	600	136,5	246	150	168,3	545	4,5	40,23
A958012	200	600	177,8	348	200	219,1	1000	6,3	80,41
A958013	250	730	209,5	495	250	273	Ø305	6,3	168,50

Maks. dovoljen tlak / Max. allowable pressure: DN65-DN125 = 25 bar, DN150-DN250 = 16 bar

### Opombe

Vgradna dolžina ustreza standardu EN12982:2009 Basic series 68.

Požarno tesnilo.

DN250: - vzmetena tesnila  
- antistatična izvedba  
- ročni polžni pogon

DN15 - DN32 polna kroglja. DN40 - DN250 votla kroglja.

Nadgradnje na strani 79 - 86.

### Notes

Face to face dimensions conform to EN12982:2009 Basic series 68.

Fire safe design

DN250: - spring loaded washers  
- antistatic design  
- manual gearbox

DN15 - DN32 solid ball. DN40 - DN250 hollow ball.

Upgrades on pages 79 - 86.

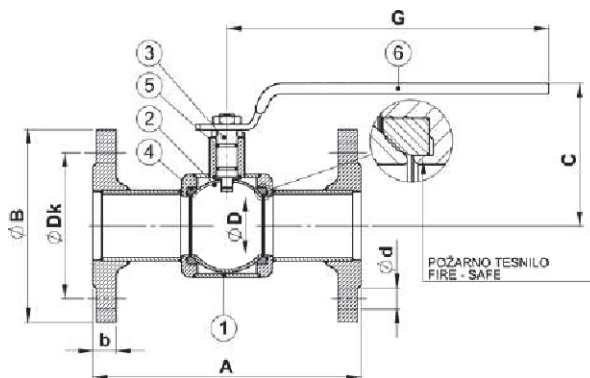
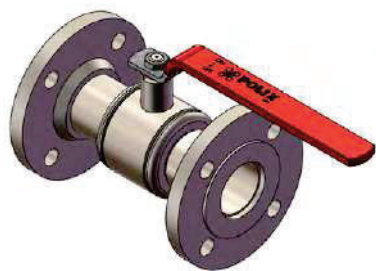


# KPT PRIROBNIČNA IZ OGLJIKOVEGA JEKLA, POLNI PRETOK / KPT FLANGED CARBON STEEL, FULL BORE

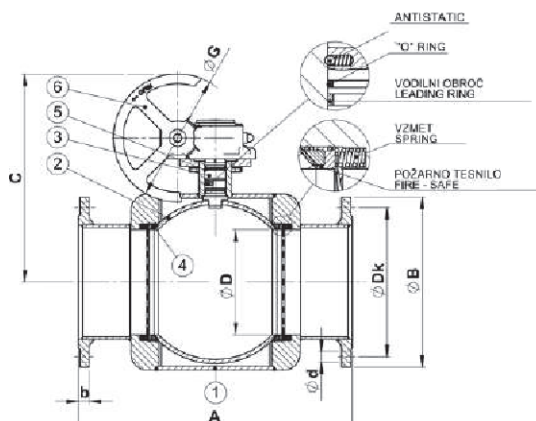


// Polni pretok / Full bore

DN15-DN200



DN250



## Materiali / Materials

1	Ohišje Body	Ogljikovo jeklo – A105, P235TR2 Carbon Steel – A105, P235TR2
2	Krogla Ball	Nerjavno jeklo - 1,4301 (X5CrNi18-10) AISI 304 Stainless steel - 1,4301 (X5CrNi18-10) AISI 304
3	Vreteno Stem	Nerjavno jeklo – 1.4028 (X30Cr13) AISI 420 Stainless Steel – 1.4028(X30Cr13) AISI 420
4	Tesnilo krogle Ball seats	PTFE*
5	O-Obroč O-Ring	PTFE + Viton
6	Ročica Handle	Ogljikovo jeklo (cinkano) – S235JR (St 37-2) Carbon steel (galvanized) – S235JR (St 37-2)

\*DN15, DN20, DN150, DN200, DN250 imajo tesnilo s 15% grafitom.

\*DN15, DN20, DN150, DN200, DN250 have a 15% graphite seal.

## Navor / Torque

DN	Maks. navor Max torque P = 16 bar T = 20°C	Maks. navor Max torque P = 40 bar T = 20°C	Prilagodljivi navor za pogon Recommendable torque for actuator
	[Nm]	[Nm]	[Nm]
15	6	10	20
20	8	15	20
25	15	20	30
32	20	30	45
40	25	40	60
50	35	55	80
65	45	80	120
80	60	100	150
100	90	150	200
125	180	350	450
150	250	500	700
200	400	700	1000
250	500	700	1200

**Opomba:** Navori so bili izmerjeni s čisto vodo pri sobni temperaturi na ventilih s PTFE tesnili. Navor se lahko poveča pri ventilih, ki imajo tesnila iz drugačnih materialov, pri merjenju z različnimi tekočinami, višjimi temperaturami, posebnimi obratovalnimi pogoji in/ali v primeru, da je ventil dlje časa pod diferencialnim tlakom, ne da bi obratoval.

**Remarks:** The torques were measured on valves supplied with virgin PTFE seats, with clean water at room temperature. For valves with other seat material, different fluids, higher temperatures, specific operating conditions and/or in case the valve is kept for a long time under differential pressure without being operated, the torque can increase.